

# EKK.p

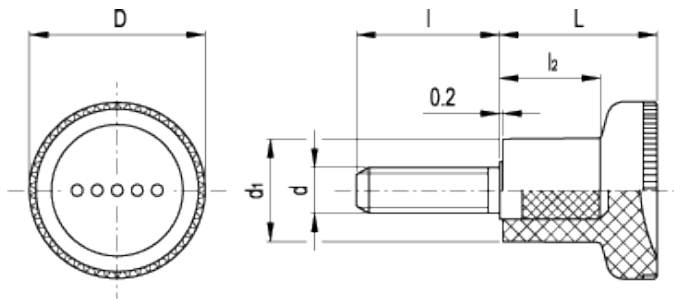
Knurled knobs



ELESA Original design



ERGOSTYLE®



## technical informations

### Material

Glass-fibre reinforced polyamide based (PA) technopolymer. Resistant to solvents, oils, greases and other chemical agents.

### Colour

Grey-black, matte finish.

### Assembly

Zinc-plated steel threaded stud, chamfered end according to UNI 947 : ISO 4753 (see [Technical Data](#) ).

### Special executions on request

Should these knurled knobs be requested in one of the other Ergostyle colours, we suggest to use, if possible, the boss type (see [EKK.](#)). For sufficient quantities the knurled knobs EKK.p can anyway be provided in one of the other Ergostyle colours.

### Ergonomy and design

When it is used as a push-pull button, the thumb rests naturally on the concave front surface improving the grip. The slight knurling on the rim of the knob makes tightening or clamping operations easier.

Code	Description	D	L	d <sub>1</sub>	l <sub>2</sub>	d <sub>6g</sub>	l	g
243121-C 1	EKK.21 p-M5x10-C 1	21	18	12.5	10.5	M5	10	7
243126-C 1	EKK.21 p-M5x16-C 1	21	18	12.5	10.5	M5	16	8
243131-C 1	EKK.21 p-M5x20-C 1	21	18	12.5	10.5	M5	20	9
243146-C 1	EKK.21 p-M6x16-C 1	21	18	12.5	10.5	M6	16	10
243151-C 1	EKK.21 p-M6x20-C 1	21	18	12.5	10.5	M6	20	11
243161-C 1	EKK.21 p-M6x30-C 1	21	18	12.5	10.5	M6	30	13
243226-C 1	EKK.25 p-M6x16-C 1	25	22.5	14.5	14	M6	16	13
243231-C 1	EKK.25 p-M6x20-C 1	25	22.5	14.5	14	M6	20	14
243236-C 1	EKK.25 p-M6x25-C 1	25	22.5	14.5	14	M6	25	15
243241-C 1	EKK.25 p-M6x30-C 1	25	22.5	14.5	14	M6	30	16
243326-C 1	EKK.31 p-M8x20-C 1	31	27	18.5	17	M8	20	26
243331-C 1	EKK.31 p-M8x25-C 1	31	27	18.5	17	M8	25	28
243336-C 1	EKK.31 p-M8x30-C 1	31	27	18.5	17	M8	30	30
243346-C 1	EKK.31 p-M8x40-C 1	31	27	18.5	17	M8	40	32
243361-C 1	EKK.31 p-M10x30-C 1	31	27	18.5	17	M10	30	34
243371-C 1	EKK.31 p-M10x40-C 1	31	27	18.5	17	M10	40	40

This product had the following design awards:



ELESA and GANTER models all rights reserved in accordance with the law. Always mention the source when reproducing our drawings.

STANDARD MACHINE ELEMENTS WORLDWIDE